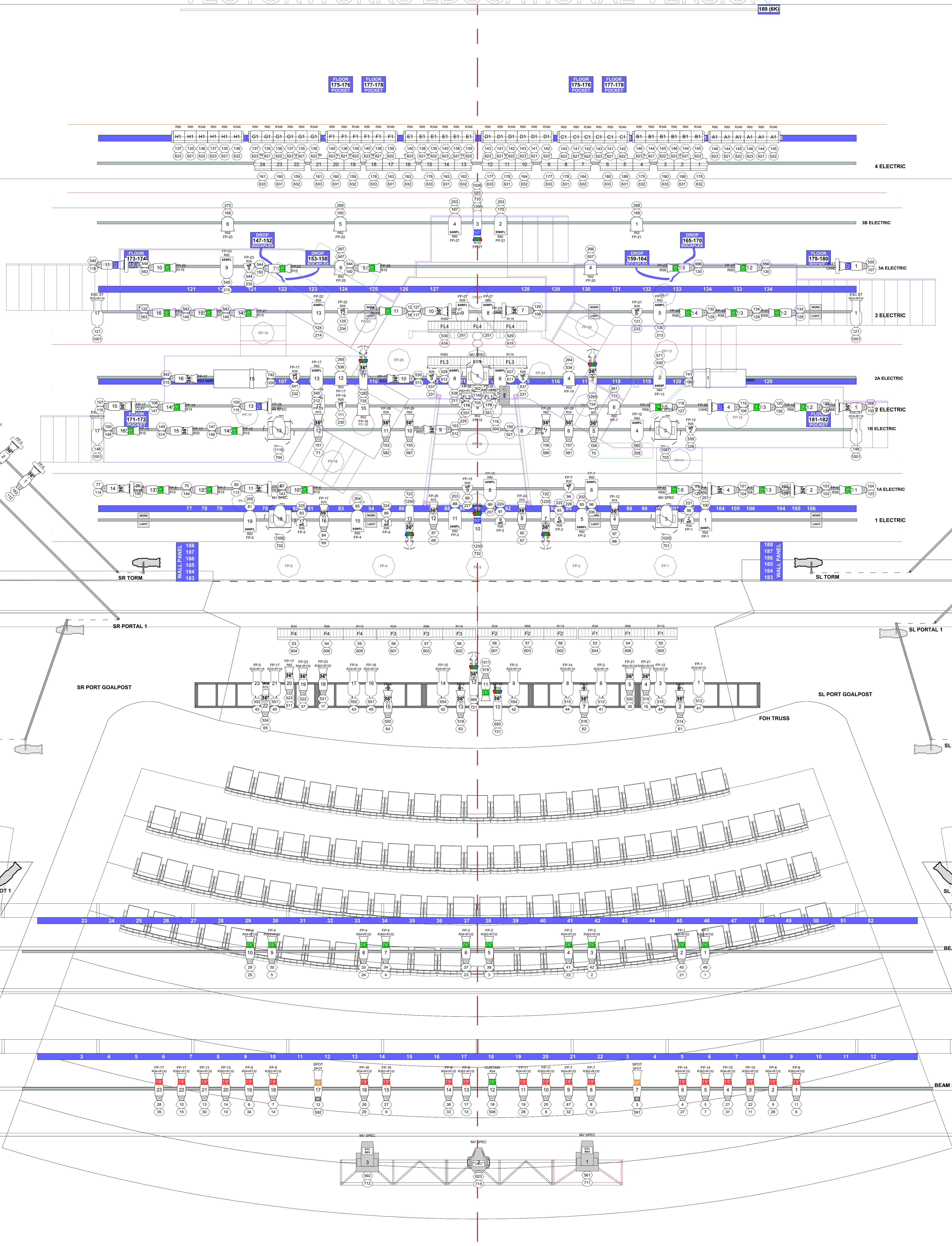


- 35: WHITE CYC
 - 34:
 - 33:
 - M-4E: 4TH ELECTRIC
 - 32:
 - 31: BLACK SCRIM
 - 30: 4TH LEGS
 - 29: 4TH BORDER
 - 28: 3B ELECTRIC
 - 27:
 - 26:
 - 25:
 - 24: 3A ELECTRIC
 - 23: FLUORESCENT FIXTURE
 - 22:
 - 21:
 - M-3E: 3RD ELECTRIC
 - 20: 3RD LEGS
 - 19: 3RD BORDER
 - 18: BANNER
 - 17:
 - 16: 2A ELECTRIC
 - 15: 2A LEGS
 - M-2E: 2ND ELECTRIC
 - 14:
 - 13: 1B ELECTRIC
 - 12: FLUORESCENT FIXTURE
 - 11: 2ND LEGS
 - 10: 2ND BORDER
 - 9:
 - 8: 1A ELECTRIC
 - 7:
 - M-1E: 1ST ELECTRIC
 - 6:
 - 5: 1ST LEGS
 - 4: 1ST BORDER
 - 3:
 - 2: FULL STAGE BLACK
 - 1: MAIN CURTAIN
 - F: FIRE CURTAIN
- ALL BATTENS ARE 36" LONG



KEY

- | | | | | | |
|---------------------------------|--------------------------------------|---------------------------------|------------------------------------|---|---|
| 2 of 2 ETC Source 4 14' 750w | 1 of 18 ETC Source 4 70' 750w | 1 of 25 Altman PAR 64 NSP 1kw | 1 of 6 Century 6x12 750w | 6 of 8 Altman 3-Circuit Zip Strip 750w | 1 of 1 D50 Hazer |
| 20 of 20 ETC Source 4 19' 750w | 6 of 22 ETC Source 4 Lustr+ 36' LED | 4 of 25 Altman PAR 64 MFL 1kw | 2 of 3 ETC Source 4 Revolution | 8 of 8 Altman 3-Circuit Sky cyc 1kw | 5 of 8 Rosco I-Cue |
| 40 of 40 ETC Source 4 26' 750w | 2 of 22 ETC Source 4 Lustr+ 50' LED | 16 of 25 Altman PAR 64 WFL 1kw | 1 of 1 Martin MAC Quantum Profile | 1 of 1 Lock Solutions Unique 2.0 Hazer | 16 of 22 Wybron ForeRunner Color Spotler |
| 36 of 32 ETC Source 4 36' 750w | 16 of 18 ETC Source 4 PAR WFL 750w | 10 of 12 8' Fresnel 1kw | 1 of 1 Martin MAC 700 Profile | 1 of 1 Lock Solutions Unique 2.1 Hazer | 5 of 7 Apollo Ez-iris |
| 4 of 5 ETC Source 4 50' 750w | 2 of 2 ETC Source 4 PAR WFL 750w | 14 of 16 Century 6x9 750w | | | |

LEGEND

- DEMO
- FOCUS
- COLOR
- GOGO
- UNIT NUMBER
- DIMMER
- CHANNEL

NOTES

Notes section for the lighting plot, containing specific instructions and details for the installation.



Department of Theatre

HEATHERS THE MUSICAL

James Thurber Theatre

ELECTRICIAN PLOT

Director MANDY FOX	Lighting Designer JOSHUA POSTON
Sound Designer BRAD STEINMETZ	Music Supervisor RACHEL HARPER
Costume Designer KRISTINE KEARNEY	Production Designer TIFFANY DUSCHIED
Walls Designer CHRIS ZINKON	Lighting Supervisor MATT HAZARD

Date: 4/27/17