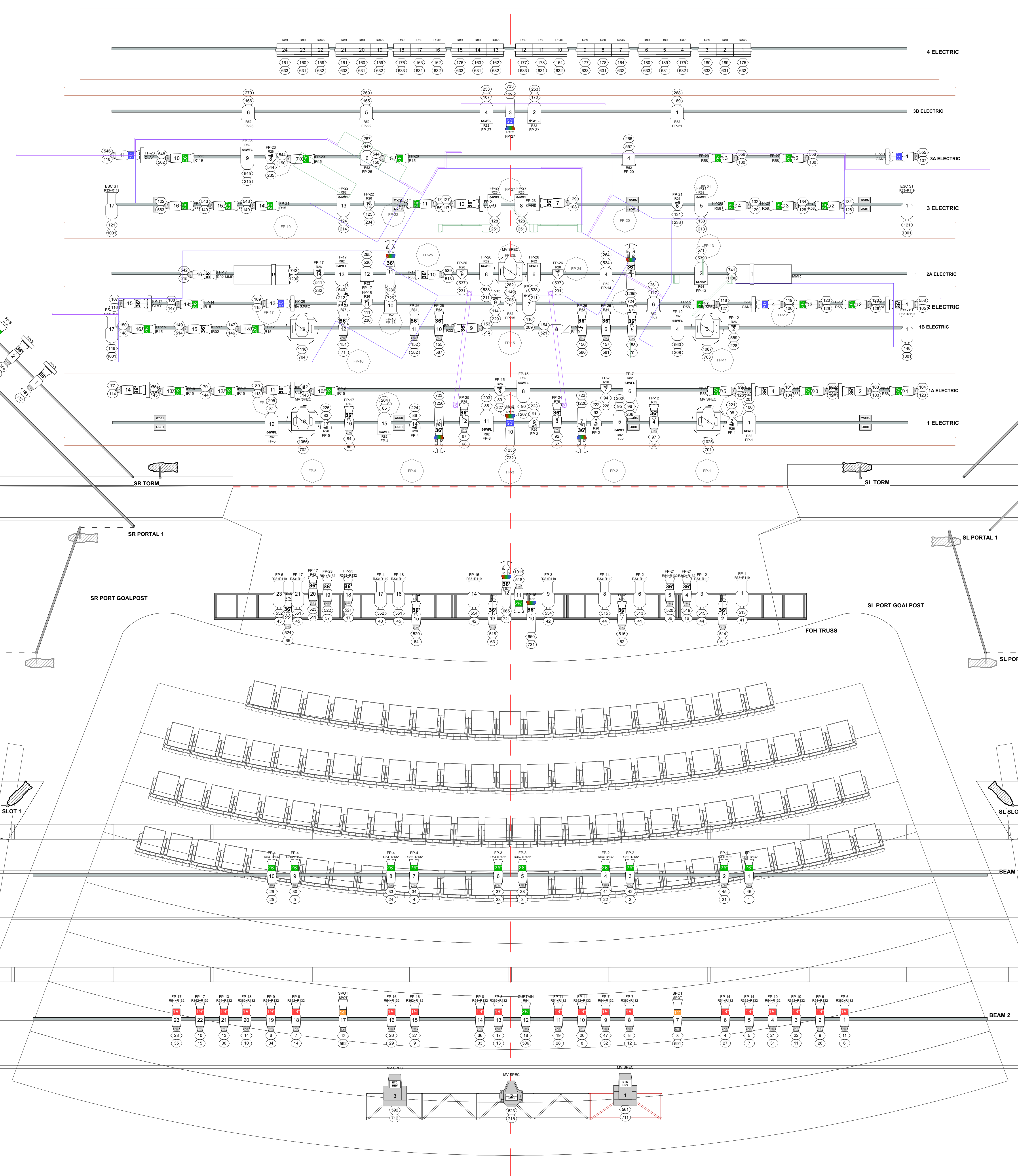


- 35: WHITE CYC
- 34:
- 33:
- M-4E: 4TH ELECTRIC
- 32:
- 31: BLACK SCRIM
- 30: 4TH LEGS
- 29: 4TH BORDER
- 28: 3B ELECTRIC
- 27:
- 26:
- 24: 3A ELECTRIC
- 23: FLUORESCENT FIXTURE
- 22:
- 21:
- M-3E: 3RD ELECTRIC
- 20: 3RD LEGS
- 19: 3RD BORDER
- 18: BANNER
- 17:
- 16: 2A ELECTRIC
- 15: 2A LEGS
- M-2E: 2ND ELECTRIC
- 14:
- 13: 1B ELECTRIC
- 12: FLUORESCENT FIXTURE
- 11: 2ND LEGS
- 10: 2ND BORDER
- 9: 1A ELECTRIC
- 7:
- M-1E: 1ST ELECTRIC
- 6: 1ST LEGS
- 4: 1ST BORDER
- 3: FULL STAGE BLACK
- 1: MAIN CURTAIN
- F: FIRE CURTAIN

ALL BATTENS ARE 36" LONG



KEY

- |                                |                                     |                                |                                   |  |   |
|--------------------------------|-------------------------------------|--------------------------------|-----------------------------------|--|---|
| 2 of 2 ETC Source 4 14" 750w   | 1 of 18 ETC Source 4 70" 750w       | 1 of 25 Altman PAR 64 NSP 1kw  | 1 of 6 Century 6x12 750w          | 6 of 8 Altman 3-Circuit Zip Strip 750w | 1 of 1 D50 Hazer                          |
| 20 of 20 ETC Source 4 19" 750w | 6 of 22 ETC Source 4 Lustr+ 38" LED | 4 of 25 Altman PAR 64 MFL 1kw  | 2 of 3 ETC Source 4 Revolution    | 8 of 8 Altman 3-Circuit Skydeck 1kw    | 5 of 8 Rosco I-Cue                        |
| 40 of 40 ETC Source 4 26" 750w | 2 of 22 ETC Source 4 Lustr+ 50" LED | 16 of 25 Altman PAR 64 WFL 1kw | 1 of 1 Martin MAC Quantum Profile | 1 of 1 Look Solutions Unique 2.0 Hazer | 16 of 22 Wybron ForeRunner Color Scroller |
| 36 of 32 ETC Source 4 36" 750w | 16 of 18 ETC Source 4 PAR/WFL 750w  | 10 of 12 8" Fresnel 1kw        | 5 of 6 Martin MAC 700 Profile     | 1 of 1 Look Solutions Unique 2.1 Hazer | 5 of 7 Apollo EZ-Hls                      |
| 4 of 5 ETC Source 4 50" 750w   | 2 of 2 ETC Source 4 PAR/WFL 750w    | 14 of 16 Century 6x9 750w      |                                   |  |   |

LEGEND

- DEMO R00
- FOCUS COLOR
- GOGO
- UNIT NUMBER
- DIMMER
- CHANNEL

NOTES



Department of Theatre

**HEATHERS THE MUSICAL**

James Thurber Theatre

**LIGHT PLOT HANGING FIXTURES**

Designer: MANDY FOX	Lighting Designer: JOSHUA POSTON
Sound Designer: BRAD STEINMETZ	Head Costume Designer: RACHEL HARPER
Costume Designer: KRISTINE KEARNEY	Production Designer: TIFFAN DUSCHIED
Music Designer: CHRIS ZINKON	Lighting Supervisor: MATT HAZARD

Date: 4/27/17 Page: 1 of 4