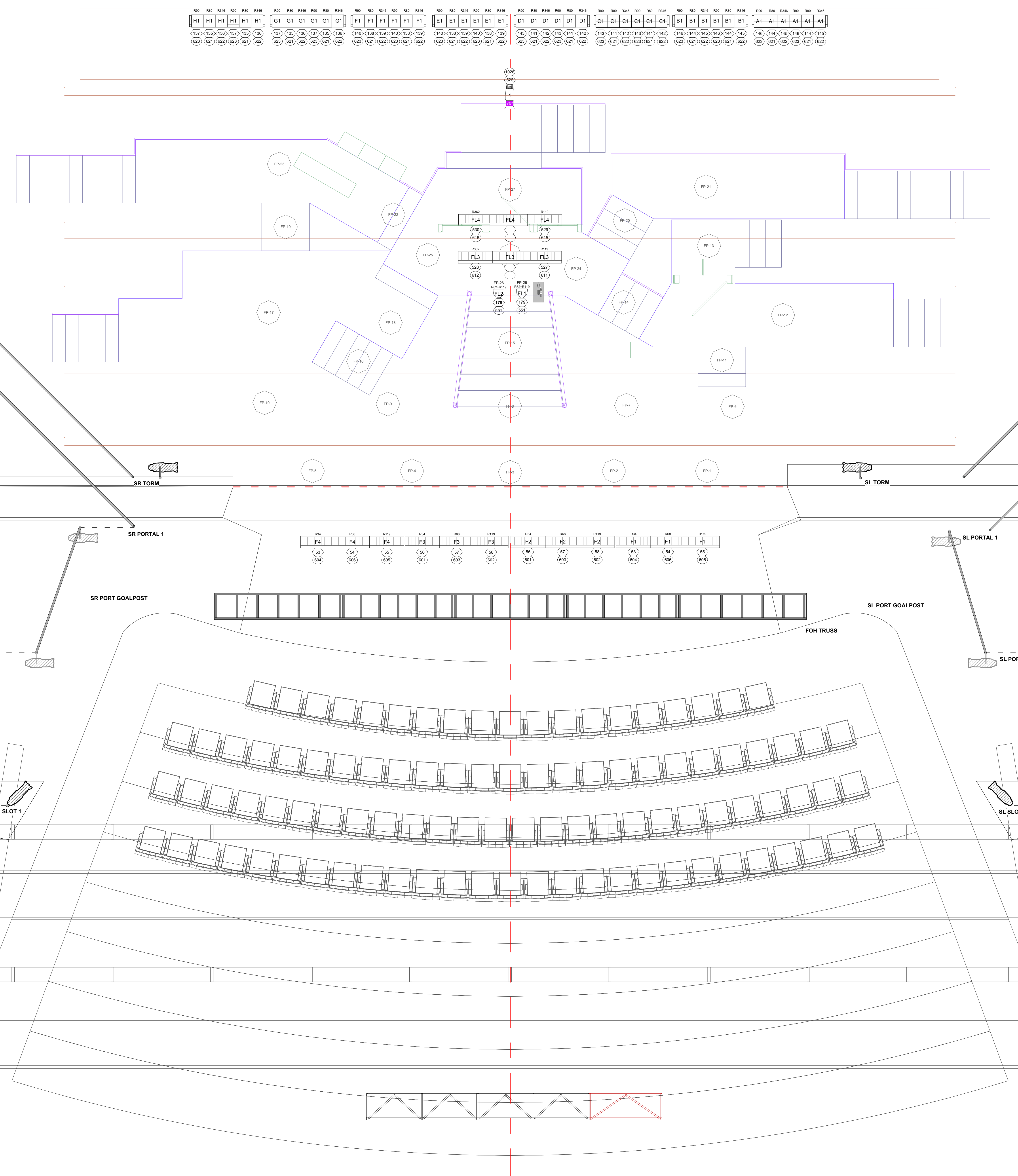


- 35: WHITE CYC
- 34:
- 33:
- M-4E: 4TH ELECTRIC
- 32:
- 31: BLACK SCRIM
- 30: 4TH LEGS
- 29: 4TH BORDER
- 28: 3B ELECTRIC
- 27:
- 26:
- 25:
- 24: 3A ELECTRIC
- 23:
- 22: FLUORESCENT FIXTURE
- 21:
- M-3E: 3RD ELECTRIC
- 20: 3RD LEGS
- 19: 3RD BORDER
- 18:
- 17: BANNER
- 16: 2A ELECTRIC
- 15: 2A LEGS
- M-2E: 2ND ELECTRIC
- 14:
- 13: 1B ELECTRIC
- 12: FLUORESCENT FIXTURE
- 11: 2ND LEGS
- 10: 2ND BORDER
- 9:
- 8: 1A ELECTRIC
- 7:

ALL BATTERNS ARE 36" LONG

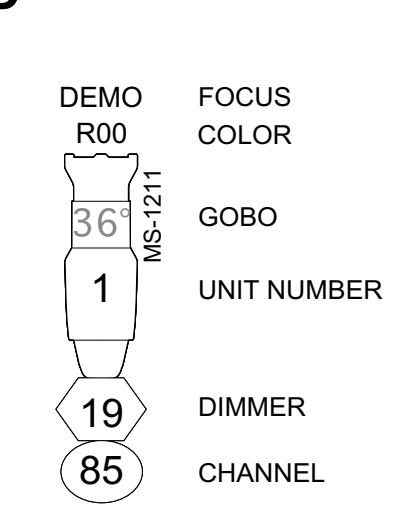
- M-1E: 1ST ELECTRIC
- 6:
- 5: 1ST LEGS
- 4: 1ST BORDER
- 3:
- 2: FULL STAGE BLACK
- 1: MAIN CURTAIN
- F: FIRE CURTAIN



KEY

- |                                |                                     |                                |                                   |  |   |
|--------------------------------|-------------------------------------|--------------------------------|-----------------------------------|--|---|
| 2 of 2 ETC Source 4 14' 750w   | 1 of 18 ETC Source 4 70' 750w       | 1 of 25 Altman PAR 64 NSP 1kw  | 1 of 6 Century 6x12 750w          | 6 of 8 Altman 3-Circuit Zip Strip 750w | 1 of 1 D50 Hazer                          |
| 20 of 20 ETC Source 4 19' 750w | 6 of 22 ETC Source 4 Lustr+ 36" LED | 4 of 25 Altman PAR 64 MFL 1kw  | 2 of 3 ETC Source 4 Revolution    | 8 of 8 Altman 3-Circuit Skycyc 1kw     | 5 of 8 Rosco I-Cue                        |
| 40 of 40 ETC Source 4 26' 750w | 2 of 22 ETC Source 4 Lustr+ 50" LED | 16 of 25 Altman PAR 64 WFL 1kw | 1 of 1 Martin MAC Quantum Profile | 1 of 1 Look Solutions Unique 2.0 Hazer | 16 of 22 Wybron FireRunner Color Scroller |
| 36 of 32 ETC Source 4 36' 750w | 16 of 18 ETC Source 4 PAR WFL 750w  | 10 of 12 8" Fresnel 1kw        | 1 of 1 Martin MAC 700 Profile     | 1 of 1 Look Solutions Unique 2.1 Hazer | 5 of 7 J1: Apollo E2-Ins                  |
| 4 of 5 ETC Source 4 50' 750w   | 2 of 2 ETC Source 4 PARrel 750w     | 14 of 16 Century 6x9 750w      |                                   |  |   |

LEGEND



NOTES

Notes area for technical specifications and instructions.



Department of Theatre	
<b>HEATHERS THE MUSICAL</b>	
James Thurber Theatre The Ohio State University	
<b>STAGE DECK LIGHT PLOT</b>	
Director MANDY FOX	Lighting Designer JOSHUA POSTON
Technical Designer BRAD STEINMETZ	Head Lighting Designer RACHEL HARPER
Costume Designer KRISTINE KEARNEY	Production Designer TIFFANY DUSCHEID
Music Designer CHRIS ZINKON	Lighting Supervisor MATT HAZARD
Date 4/27/17	Page 2 of 4