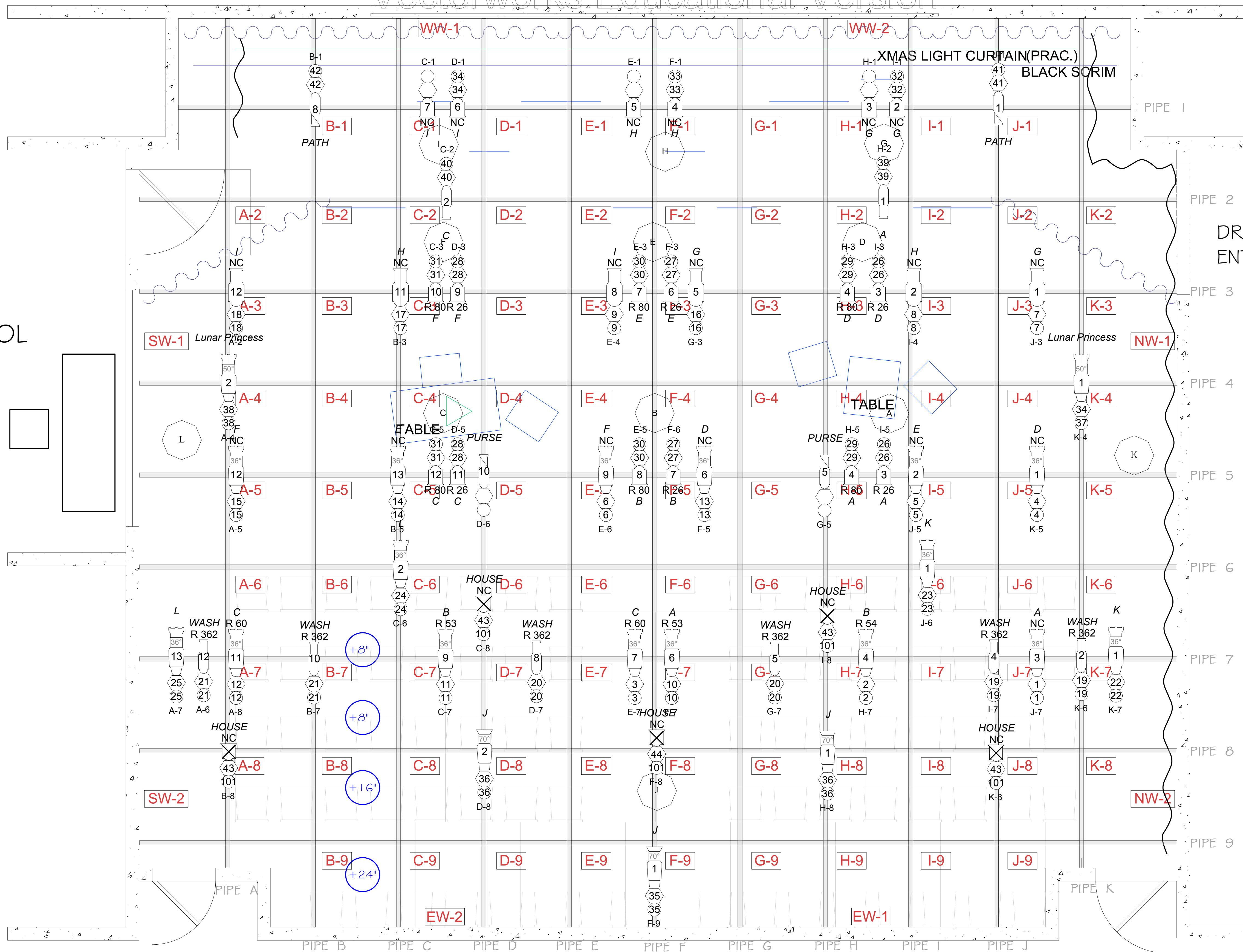


CONTROL BOOTH



LEGEND	
16 of 16 ETC S4 36°, 575w	4 of 5 ALTMAN 3.5Q 3.5X8, 500W
2 of 4 ETC S4 50°, 575w	8 of 9 ALTMAN 3.5Q 3.5X6, 500W
6 of 7 CENTURY 6X9, 750w	3 of 3 CENTURY 6° Fresnel, 500W
20 of 20 ALTMAN 6° FRESNEL, 750w	3 of 3 ETC S4 70°, 575w

KEY	
R01	AREA 1 FOCUS
R01	COLOR
R01	IRIS/ GOBO
R01	INSTRUMENT NUMBER
12	DIMMER
11	CHANNEL
A-1	CIRCUIT

NOTES

- THERE IS A STOCK OF (6) 25' TWISTLOCK CABLES
- THERE IS A STOCK OF (35) TWISTLOCK TWO-FERS
- THERE IS A STOCK OF (4) 7.5" BARNDOORS
- ALL TWO-FERING WILL HAPPEN AT DIMMERS
- CHANNEL 48 ROTATE PWR (CIRC A-3, K-3)
- CHANNEL 47 HANGING PRACTICAL (CIRC C-4)
- CHANNEL 46 XMAS CURTAIN PRAC (CIRC A-1)

DRAKE:

- 10- 10' JUMPERS
- 4- ETC S4 70 DEG
- 6- 7.5" BARNDOORS
- 2- GLASS GOBO ROTATERS



THE OHIO STATE UNIVERSITY
COLLEGE OF ARTS AND SCIENCES

DEPARTMENT OF THEATRE	
THE NORWEGIANS	
LIGHT PLOT	PLATE: 1
DIRECTOR: JEN SCHLUETER	OF 1
DESIGNER: JOSH POSTON	SCALE: 1/2" TO 1"
DRAFTED BY: JOSH POSTON	
MOUNT HALL THEATRE	DATE: 09/07/14