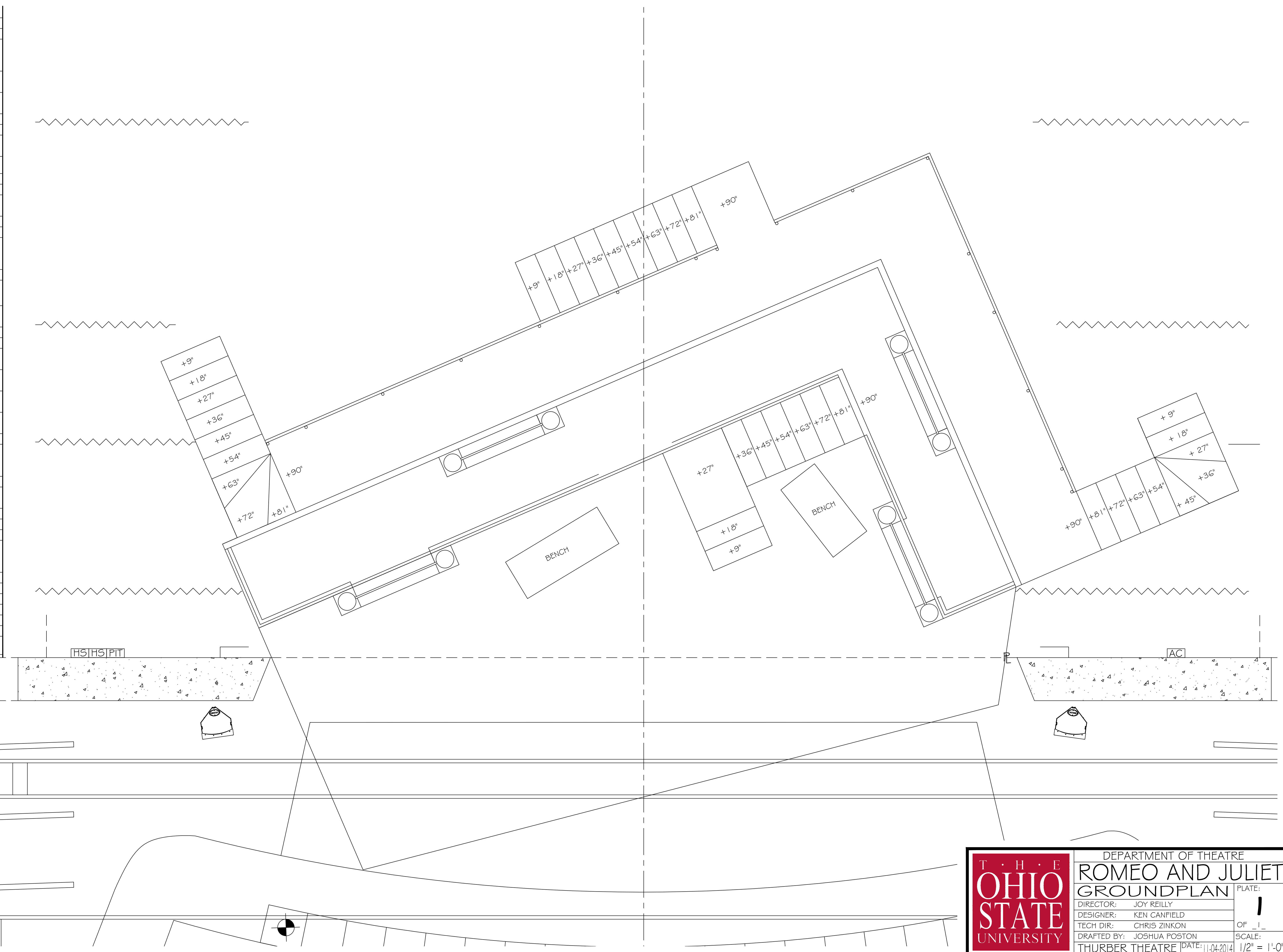
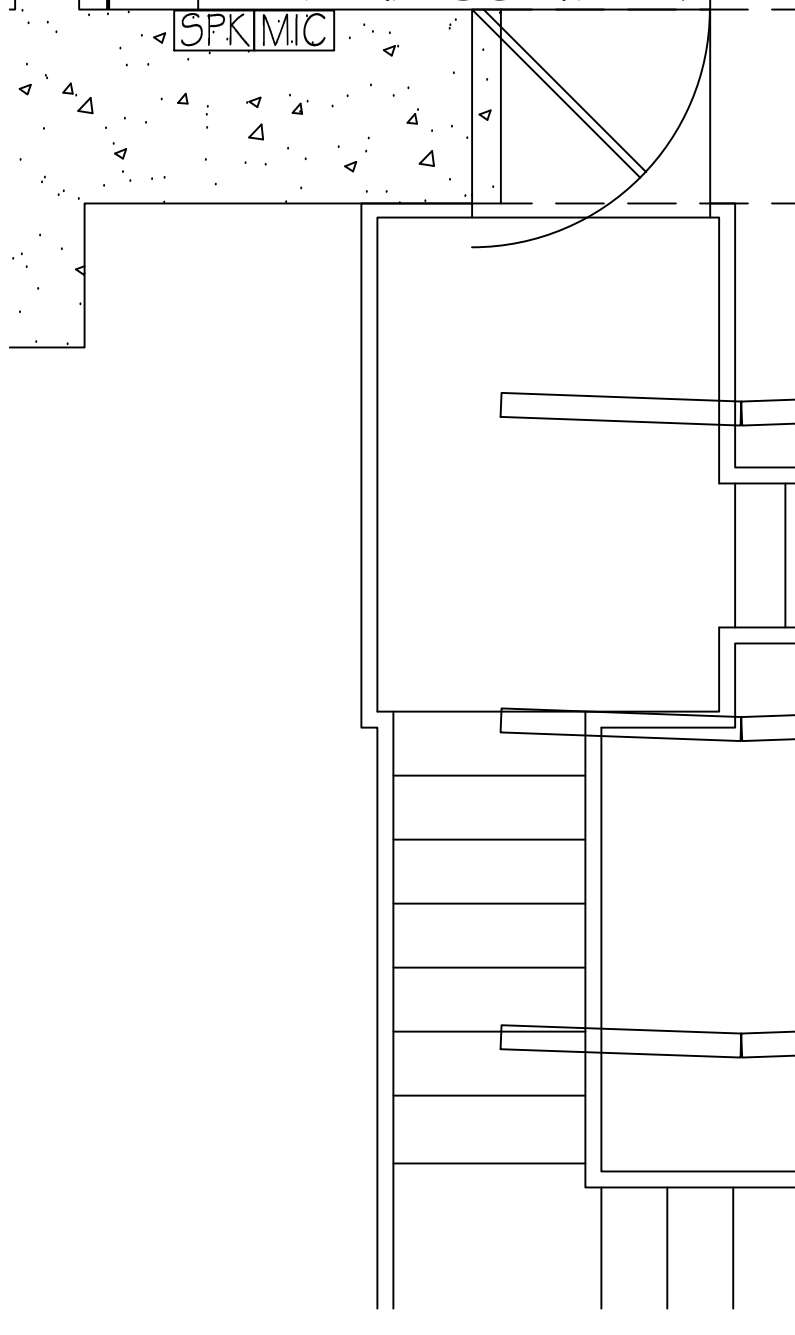


- 35: WHITE CYC
 34:
 33:
 M-4E: 4TH ELECTRIC - 27'-6"
 32:
 31: BLACK SCRIM - 25'-0"
 30: 4TH LEGS - 23'-0"
 29: 4TH BORDER - 25'-0"
 28:
 27:
 26:
 25:
 24:
 23:
 22:
 21:
 M-3E: 3RD ELECTRIC - 27'-3"
 20:
 19: 3RD LEGS - 25'-0"
 18: 3RD BORDER - 23'-0"
 17:
 16:
 M-2E: 2ND ELECTRIC - 28'-0"
 14:
 13: 2ND LEGS - 25'-0"
 12: 2ND BORDER - 23'-0"
 11:
 10:
 9:
 8:
 7:
 M-1E: 1ST ELECTRIC - 27'-3"
 6:
 5: 1ST LEGS - 25'-0"
 4: 1ST BORDER - 23'-0"
 3:
 2:
 1: MAIN CURTAIN
 F: FIRE CURTAIN



	DEPARTMENT OF THEATRE	
	ROMEO AND JULIET	
	GROUNDPLAN	
	DIRECTOR:	JOY REILLY
	DESIGNER:	KEN CANFIELD
TECH DIR:	CHRIS ZINKON	
DRAFTED BY:	JOSHUA POSTON	
THURBER THEATRE	DATE: 11-04-2014	PLATE: 1 OF 1 SCALE: 1/2" = 1'-0"